

Microsoft® SQL Server 2008

Hendrik Sudianto
BI Consultant
hendrik@ebizcipta.com

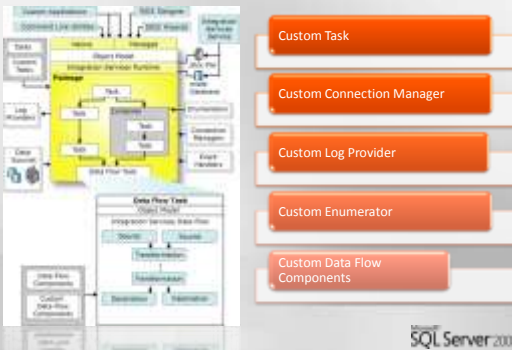
SSIS – Custom Component

Overview

- SSIS includes a greatly improved object model, which has been completely rewritten with enhancements that make programming packages easier and more flexible.
- Programming Integration Services lets developers extend and customize almost every aspect of the object model.
- Custom Integration Services extensions can be created and seamlessly integrated into Business Intelligence Development Studio.

SQL Server 2008

Architecture



SQL Server 2008

Steps in Developing Custom Components

- Create a new project of type Class Library
- Inherit from the appropriate base class
- Apply the appropriate attribute to your new class
- Override the methods of the base class as required and write code for the custom functionality of your object.
- Optionally, build a custom user interface for your component
- Build, deploy, and debug custom component

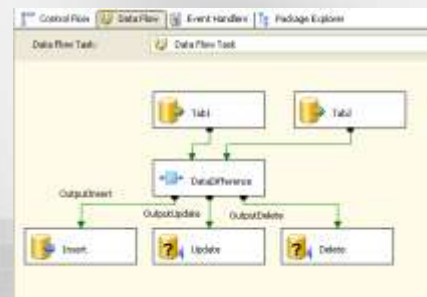
SQL Server 2008

Steps in Building, Deploying and Debugging

- Sign the assembly to be generated with a strong name.
- Build the assembly.
- Deploy the assembly by moving or copying it to the appropriate Integration Services folder.
- Install the assembly in the global assembly cache (GAC).
- Add the object to the Toolbox, when the object is a task or data flow component.
- Troubleshoot the deployment, if necessary.
- Test and debug your code

SQL Server 2008

Demo



SQL Server 2008

